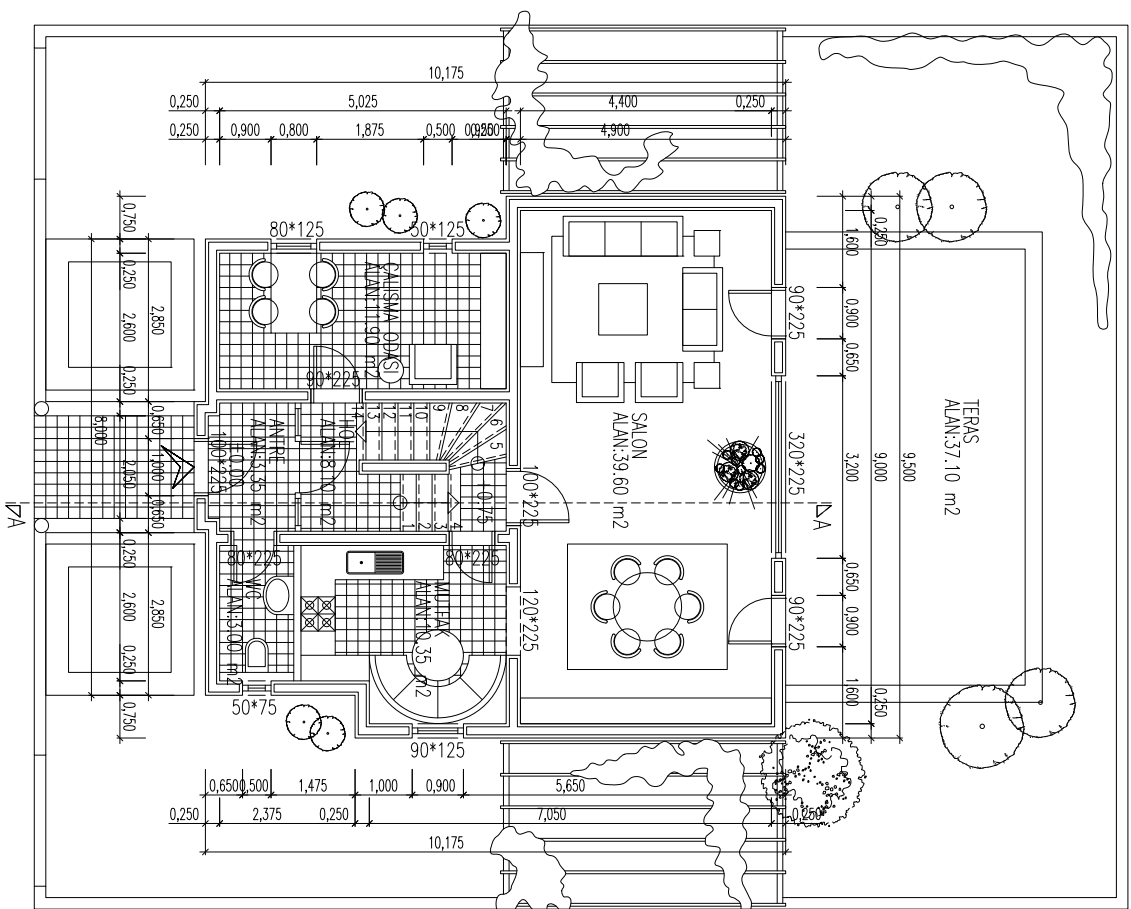


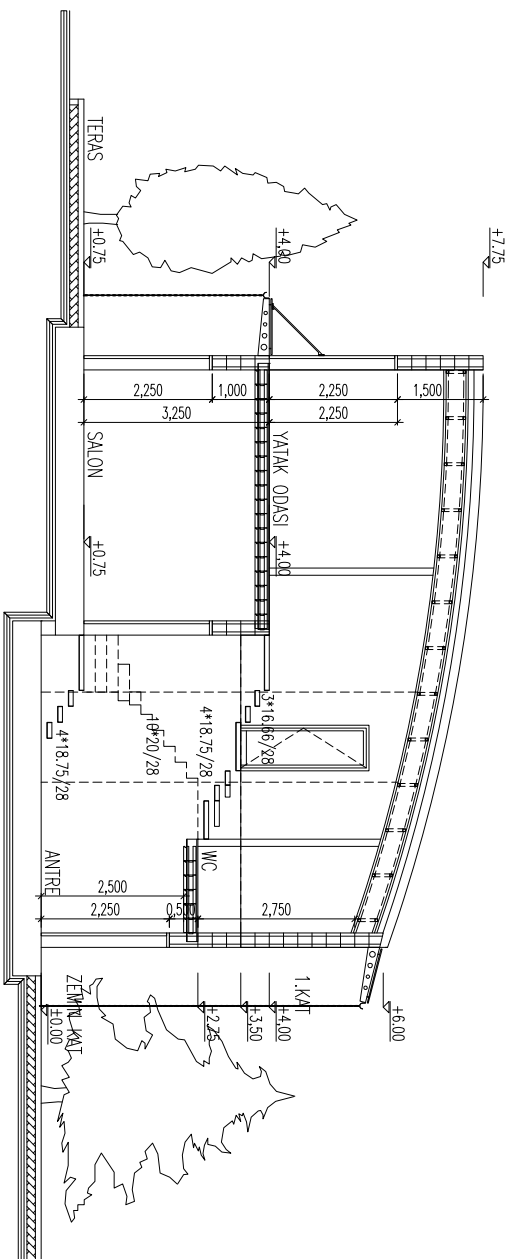
ZEMİN KAT PLANI

1.KAT PLANI

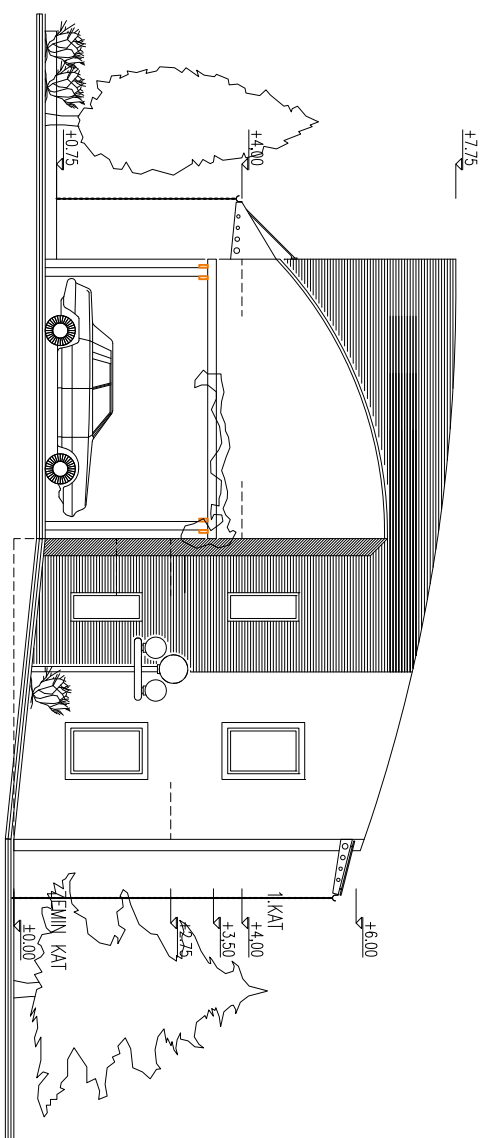
PROJE ADI:	DOLUNAY	PROJE YERİ:	TİP PROJE	TARİH:	25/03/2008	PROJE NO:	
PROJE SAHİBİ:	ISORAST YAPI ELEMANLARI A.Ş.	ÖLÇEK:	1/100	ÇİZEN:		SAFA NO:	1
				PATLA ADI:	KAT PLANLARI	DOSYA ADI:	DOLUNAY/DOLUNAY



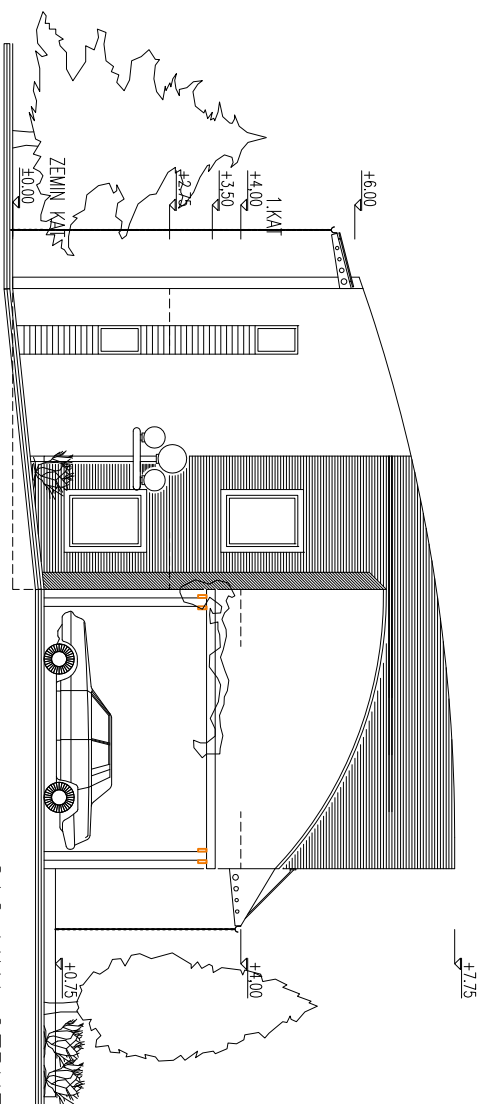
PROJE ADI:	DOLUNAY	PROJE YERİ:	TIP PROJE	TARİHİ:	25/03/2008	PROJE NO:	
PROJE SAHİBİ:	ISORAST YAPI ELEMANLARI A.S.	ÖLÇEK:	1/100	ÇİZEN:		SAHFA NO:	1
				PAFTA ADI:	ZEMİN KAT PLANLARI	DOSTA ADI:	DOLUNAY/DOLUNAY



PROJE ADI:	DOLUNAY	PROJE YERİ:	TIP PROJE	TARİHİ:	25/03/2008	PROJE NO:	
PROJE SAHİBİ:	İSORAST YAPI ELEMANLARI A.Ş.	ÖLÇEK:	1/100	ÇİZEN:		SAYFA NO:	3
				PAFTA ADI:	KESTİLER	DİĞER ADI:	DOLUNAY/DOLUNAY

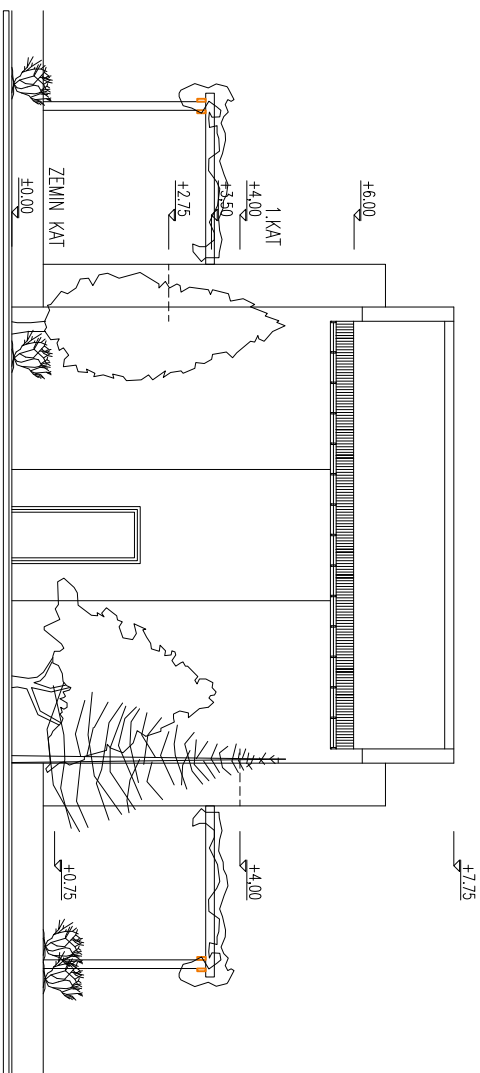


SOL YAN CEPHE

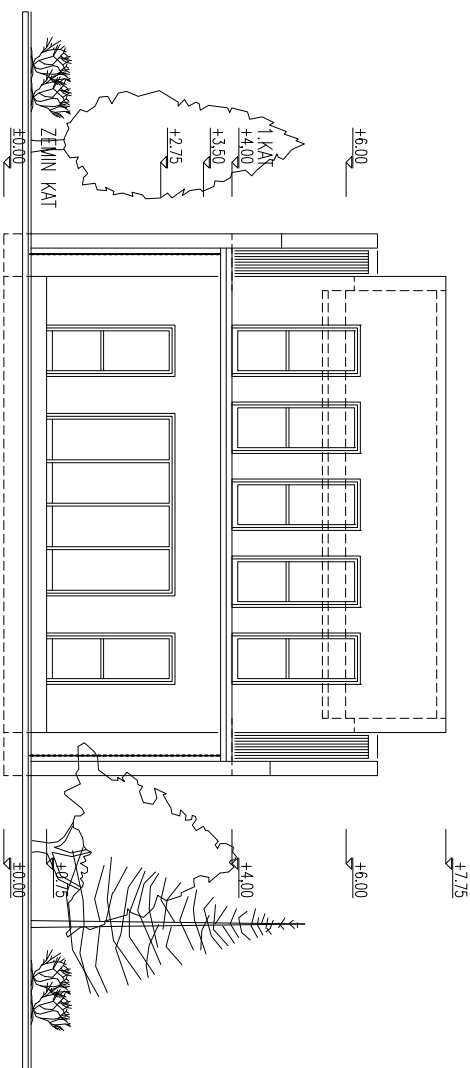


SAG YAN CEPHE

PROJE ADI:	DOLUNAY	PROJE YERİ:	TİP PROJE	TARİH:	25/03/2008	PROJE NO:	
PROJE SAHİBİ:	ISORAST YAPI ELEMANLARI A.Ş.	ÖLÇEK:	1/100	ÇİZEN:		SAFA NO:	4
				PATLA ADI:	CEPHELER	DOSTA ADI:	DOLUNAY/DOLUNAY



ÖN CEPHE



ARKA CEPHE

PROJE ADI:	DOLUNAY	PROJE YERİ:	TİP PROJE	TARİH:	25/03/2008	PROJE NO:	
PROJE SAHİBİ:	ISORAST YAPI ELEMANLARI A.Ş.	ÖLÇEK:	1/100	ÇİZEN:		SAFA NO:	5
				PATLA ADI:	CEPHELER	DOSTA ADI:	DOLUNAY/DOLUNAY